



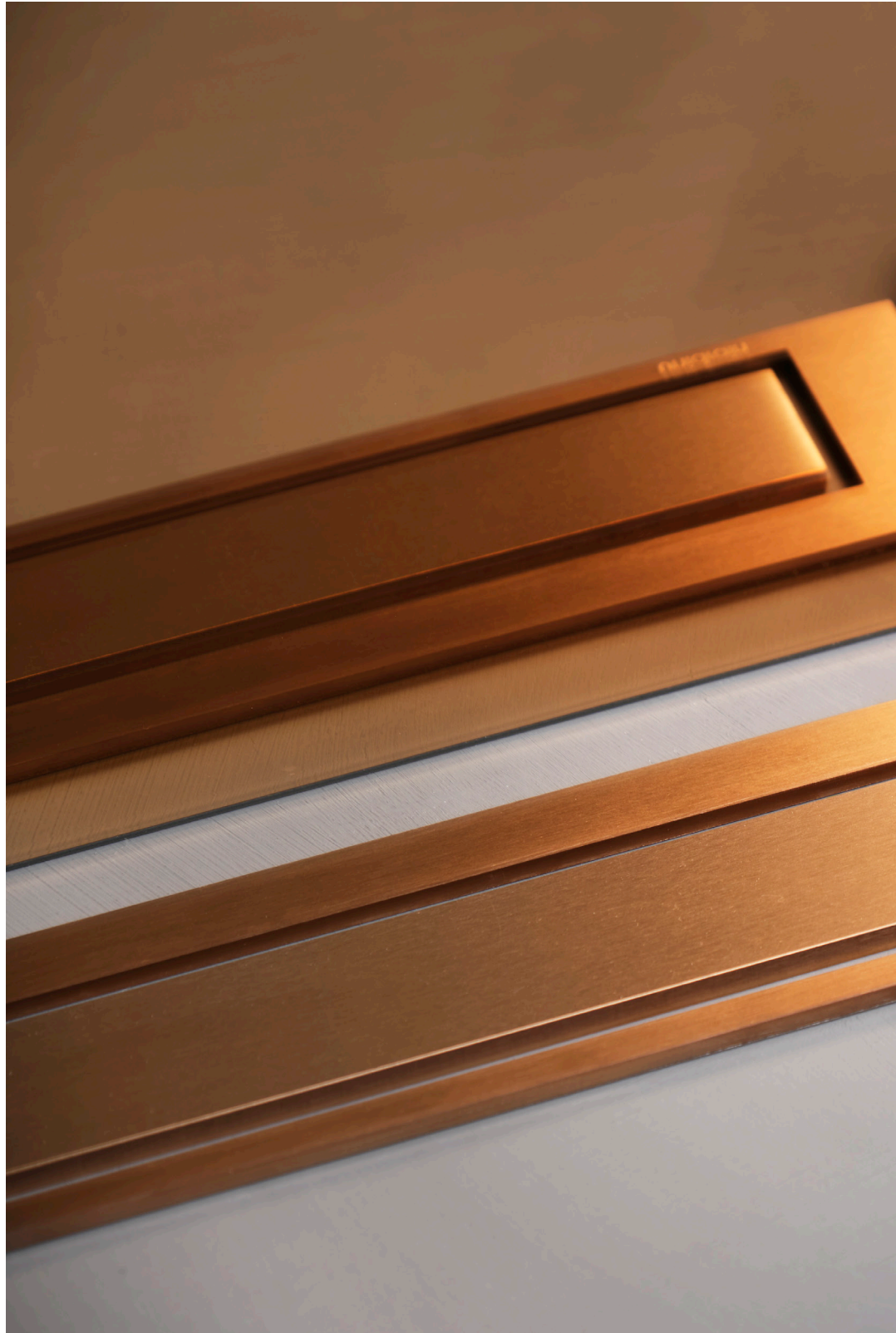
≡≡≡ unidrain®

LOOKBOOK



UNIQUE SCANDINAVIAN WET ROOM SOLUTIONS







ORIGINAL ARCHITECT INVENTION  
- THE FIRST LINE DRAIN IN THE WORLD

Danish architect Claus Dyré invented the linear drain in 2003 and made Unidrain's unique floor drain system placed against the wall the first linear drain in the world. Since then, various design products have been added.

Unidrain's products have received several international design awards.







HighLine Colour floor drain | Panel copper  
Reframe Collection by Unidrain | Soap shelf with shower wiper and hooks copper





## HIGHLINE COLOUR

YOUR STYLE - FIVE COLOURS

HighLine panel is an exclusive solution. It comes in five colours: Brushed or hand polished stainless steel, black, brass and copper.









## HIGHLINE CUSTOM

FREEDOM TO CUSTOMIZE

An almost invisible drain where a trimmed floor tile of your own choice is placed on top to match the rest of your bathroom. HighLine Custom consists of a custom base, rail and heightener.







ClassicLine floor drain | Anniversario  
GlassLine shower screen | Transparent









Classic

Column

Inca

Square

Stripe

Anniversario

## CLASSICLINE

THE ORIGINAL DESIGN RANGE

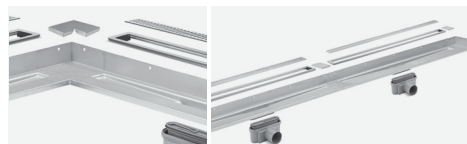
ClassicLine is the original design range from Unidrain, and consists of frame and grating.



ClassicLine floor drain | Anniversario



ClassicLine floor drain | Column





## BESPOKE DRAINS

MAKE IT YOURS

Bespoke is a customised modular line drain system which makes it possible to produce floor drains in all lengths. The solution is ideal for institutions, changing rooms or large bathrooms. It can be designed as a HighLine or ClassicLine solution.



HighLine Bespoke floor drain | Custom  
ClassicLine Bespoke floor drain | Column (right)





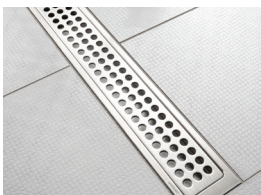
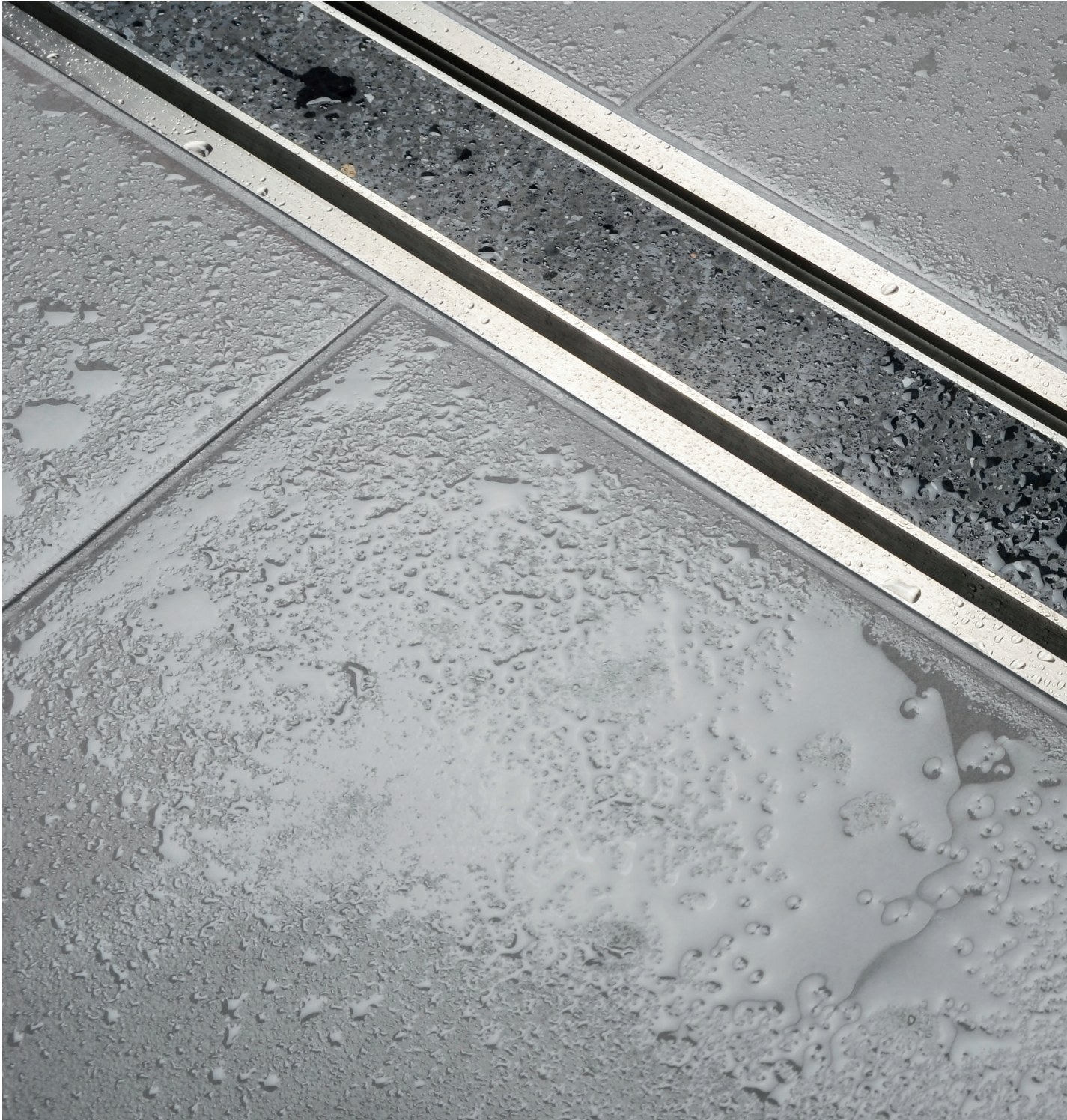




HighLine Bespoke floor drain | Custom (left)

Reframe Collection by Unidrain | Corner soap shelf and shower wiper | Hand polished (left)

HighLine Bespoke floor drain | Brass



HighLine Free-standing floor drain | Cassette (above)  
ClassicLine Free-standing floor drain | Classic



## FREE-STANDING DRAIN

A SAFE SOLUTION

You may not always want to place the floor drain against the wall, so Unidrain has developed a free-standing linear floor drain which can be placed anywhere in the floor. It can be designed as a HighLine or ClassicLine solution.







Integrated floor drain





## GLASSLINE

STATE OF THE ART

Unidrain GlassLine is a glass wall solution with an integrated floor drain and built-in slope, securing an easy installation and water tight solution. Only a discreet steel frame is visible along the wall and floor, showcasing the elegant lines and providing a timeless look.





GlassLine shower screen | black frame, HighLine Colour floor drain | black Reframe Collection soap shelf and shower wiper, toilet brush, toilet paper holder and spare toilet paper holder | black



GlassLine shower screen | black frame and HighLine floor drain | black  
Reframe Collection shower wiper | black

GlassLine shower screen | transparent and ClassicLine floor drain | Stripe (right)





GlassLine Shower screen, shower door and top rail | steel  
Reframe Collection soap shelf with shower wiper and towel bar | steel



GlassLine top rail | steel

SHOWER DOOR  
- EMPHASISE THE ELEGANT  
AND TIMELESS DESIGN

The handsome glass shower door is mounted with exclusive and stylish fittings, with no external handles. Choose between transparent or semi-matte. The top bar stabilises the shower screen and is recommended for fitting GlassLine shower doors.

GlassLine shower screen | black frame, HighLine floor drain | brass  
Reframe Collection hooks, towel bar, shower shelf with shower wiper, toilet brush holder and spare toilet paper holder | brass







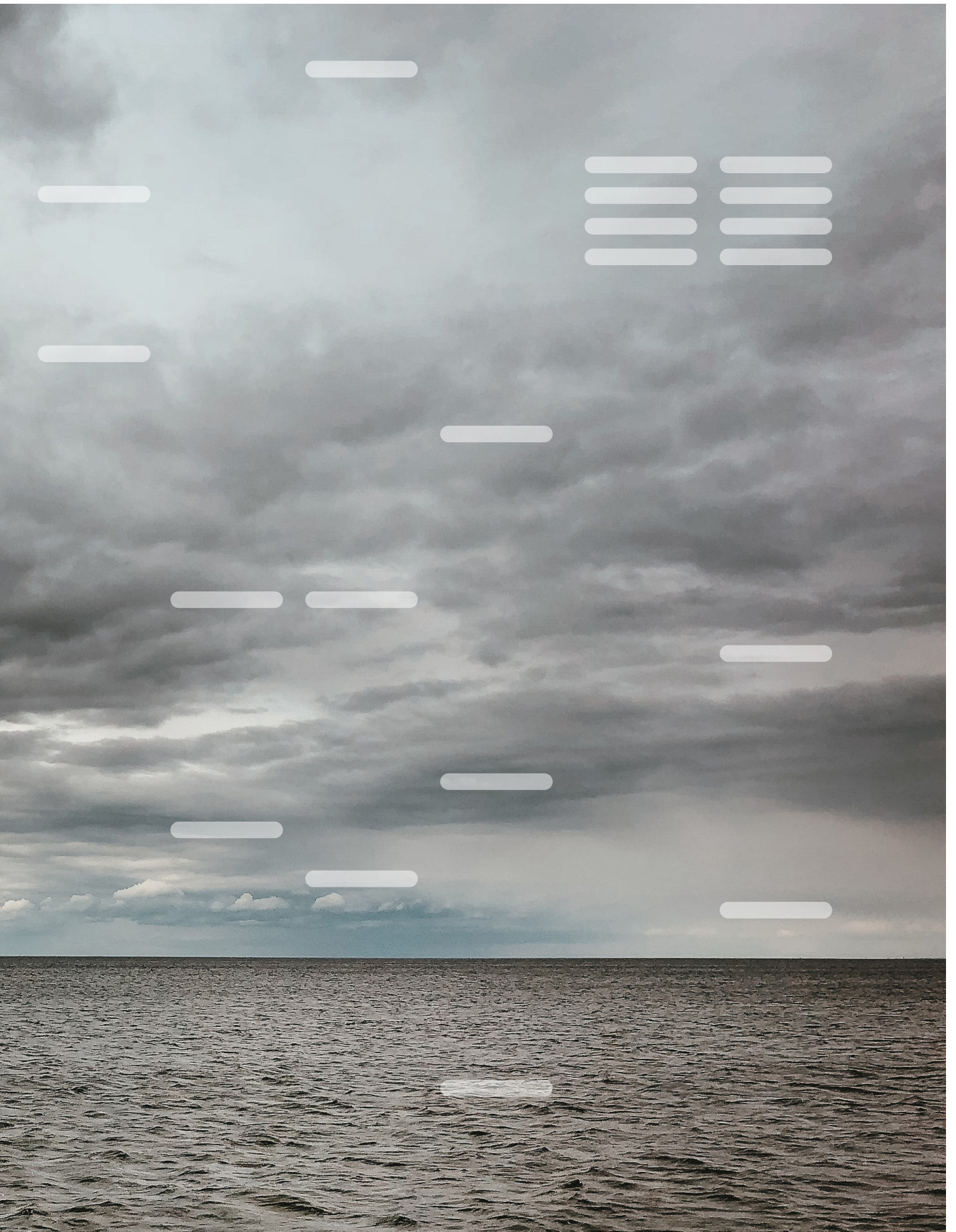
TREATED WITH  
NANOTECHNOLOGY TO REDUCE  
CLEANING TO A MINIMUM

The GlassLine shower screens fit all bathrooms: They come in several sizes and can be either right or left-mounted. Choose between either completely transparent, with exclusive semi mat decoration or with black frame

GlassLine shower screen | Transparent  
HighLine floor drain | Custom









HighLine corner floor drain | Custom

Reframe Collection corner soap shelf | copper

HighLine corner floor drain | Panel



## CORNER DRAIN

A DISCREET SOLUTION FOR LIMITED SPACE

The Unidrain corner drain is significantly smaller than the equivalent floor drains on the market.



HighLine Kvadrat square drain | Custom







HighLine Kvadrat | Custom



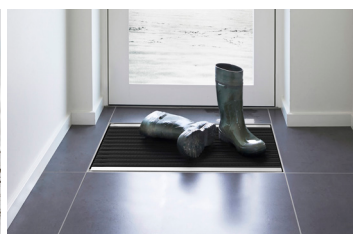
KVADRAT DRAIN

10X10 CM AND 15X15 CM

Unidrain's square floor drain allows you to achieve a uniform Unidrain expression in any room where a drain is needed but a linear drain is not an option.









## MATLINE

AN INTELLIGENT MAT SYSTEM

When the climate in periods is marked by slush, rain and mud it can be hard to keep the home clean, with children and adults leading active lives. Unidrain's MatLine is a functional and elegant solution to these day-to-day problems.





≡≡ RE | FRAME  
collection by unidrain







”My approach to this design is based on a wish to improve and reframe the existing”

Kenneth Waaben, Designer



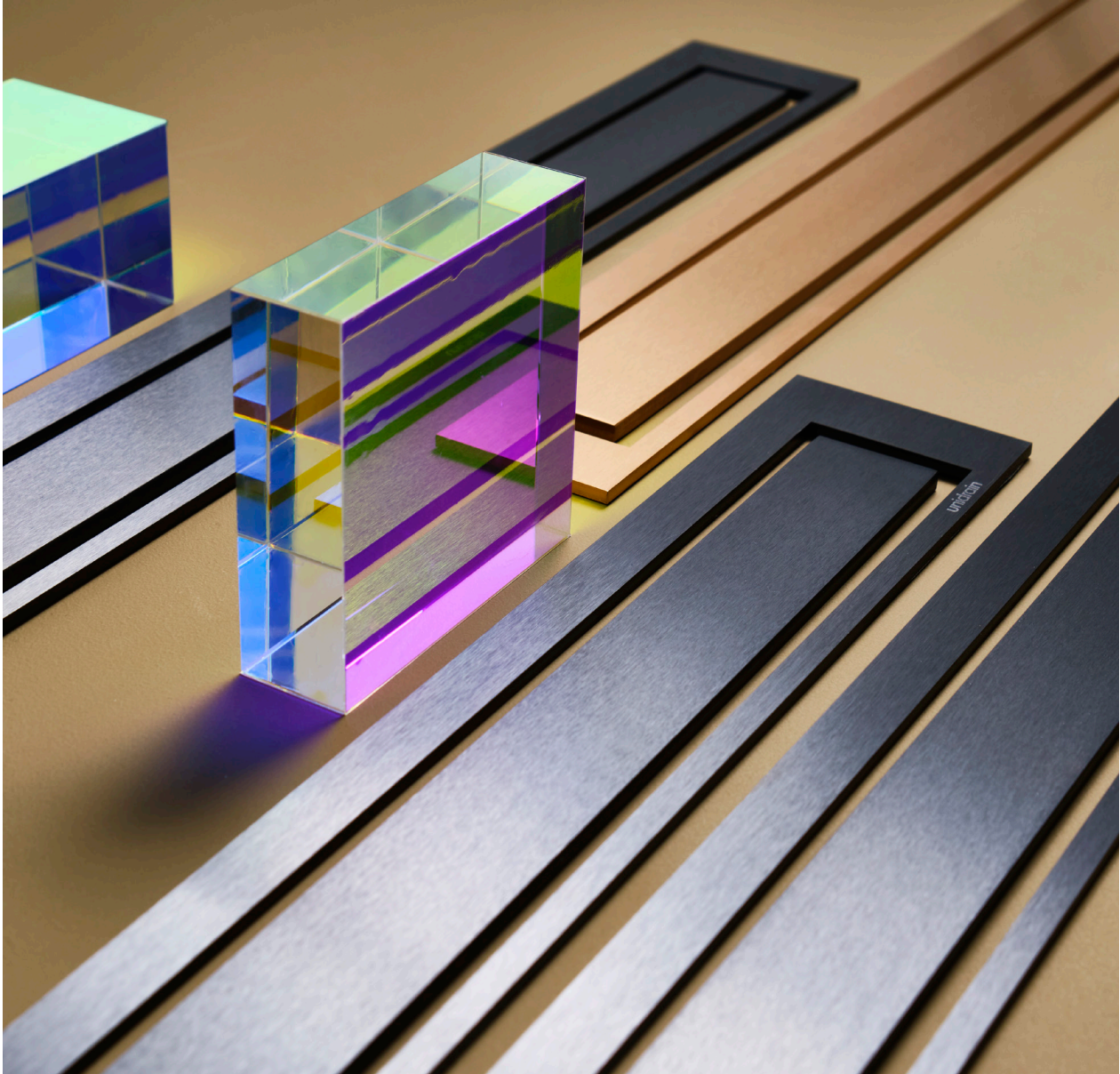
#### SOAP SHELF AND SHOWER WIPER

Besides creating a place for your shower essentials, the shelf also provides a fixed home for the shower wiper. Hidden magnets in the wall mount and shower wiper ensure a secure and discrete placement, keeping the wiper handy and easy to access at all times.



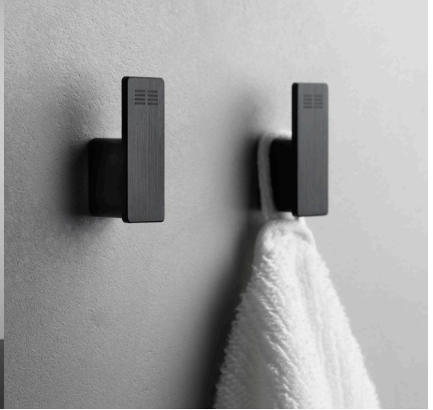
#### SHOWER WIPER

The wiper consists of two parts; a reinforced steel frame and a high quality silicone blade. This construction ensures an effective and even cleaning of all surfaces. Built in 'bumpers' on all sides protect your designer tiles.



## MATCHING COLOURS

The Reframe Collection is designed to match the award-winning Unidrain HighLine-series. Choose between five colour options: hand polished or brushed steel, brushed copper, brass or black.







## REFRAME YOUR BATHROOM EXPERIENCE

Reframe Collection by Unidrain is an exclusive and unique series of bathroom accessories designed to give your bathroom a truly Scandinavian look. The design is timeless and minimalistic.





#### TOILET BRUSH MOUNTED OR FLOOR STANDING

The inner plastic container of the toilet brush has a splash guard, which extends over the outer cover and ensures that no bacteria can get in between the two. The inner container is fitted with a 'tap' to make it easy to empty the container without coming into contact with bacteria.



TOILET PAPER HOLDER AND SPARE TOILET PAPER HOLDER



#### CORNER SOAP SHELF

Soap shelf in a reinforced steel plate to secure stability. Discreet grooves drain water away and an anti-slip barrier keeps shower essentials from sliding when the shelf is wet. The innovative wall mount can be adjusted to fit corners, which are not exactly 90°.



TOWEL BAR









Join us on facebook, instagram and pinterest.





